

## **Congratulations, Your Black Diamond cabinets are KCMA Certified.**

KCMA (Kitchen Cabinet Manufacturers Association) is the nationally recognized voluntary testing and certification program for cabinets, ANSI/KCMA A161.1, Performance & Construction Standard for Kitchen & Vanity Cabinets. The program is referenced by U.S. government agencies, architects, builders, and remodelers. Cabinets that comply & bear the KCMA Blue & White certification seal are recognized in the marketplace as a quality product able to perform after a rigorous battery of tests simulating years of typical household use. Tests are performed by approved third-party independent laboratories.

## **WARRANTY**

Please visit [www.jwcabinetry.com/support](http://www.jwcabinetry.com/support) for more information about warranties.

### **WARRANTY CONSIDERATIONS**

- A** Warranty claims are determined based on to the following factors, (KCMA standards):
  1. Aesthetics: Does the product meet industry standards in its final orientation?
  2. Functionality: Does the product perform according to industry standards?
  3. Durability: Does the item in question affect the durability of the product?
- B** Doors that are warped 1/4" or less must be allowed to hang through (2) seasons (Fall, Spring) before replacement will be made. Typically, the door will return to its normal flat position after conditioning to its environment. Prior to requesting a replacement, please be sure that the problem is not an installation deficiency.
- C** Finish deviations must be inspected by an authorized Black Diamond representative. Determination will be made following the inspection whether repair in the field or to the factory for refinishing or replacement. No field repair may be made without approval from Black Diamond. Hairline cracks, pin knots and mineral streaks are not considered as defects. Some cabinet finishes are hand-applied and hand-wiped so that the natural beauty of the woods is fully enhanced. As with any hand finishing technique, there can be subtle variations in the application, the absorption of the stain, and the glaze detailing. We recommend viewing several sample cabinet doors and displays to see the full spectrum of color and detailing. This is especially important with glaze or distressed cabinet finishes due to their artistic application.
- D** Stain variation: Since no two trees are the same, wood is a unique material with natural variations in grain, texture and color. These variations may also cause considerable differences between old samples and new cabinets. Please Note: Newly produced cabinets will never be the same color as aged samples or cabinets. This is due to the effects of aging and exposure to natural sunlight (UV) or LED and fluorescent lighting.
- E** This warranty does not apply to any Thermofoil products installed without the use of properly-installed heat shields adjacent to appliances or fixtures, such as lighting, that generate high temperatures.
- F** Repair(s) or replacement(s) are contingent upon the current product offerings of styles and construction options within the Black Diamond product line at the time of the claim. If a warranty claim is filed after a Black Diamond product becomes obsolete or discontinued, Black Diamond will replace the affected component with a new component of the same or similar style based on availability. If components are replaced, Black Diamond cannot guarantee that the finish of these replacements will exactly match the original kitchen components. This is due to the natural changes that occur during the woods aging process, this process affects both color and grain differences.
- G** Due to material variances and manufacturing processes, there is a 1/8" tolerance on the dimensions of all cabinets. Black Diamond is not responsible for any measurements taken by the Dealer and it is the Dealer's responsibility to compensate for these tolerances.
- H** All painted finish orders must have a completed Paint Finish Awareness Form.
- I** Doors will expand and contract anywhere between 1/4" to 1/2" with the seasons. It's quite common to see hairline cracks and/or exposed wood on the panel where the panel and stile meet. Prior to requesting replacement please ensure that the humidity in the area is a minimum of 40% for 14 days.
- J** The exposed areas of the cabinet have a superior quality over the semi exposed and concealed areas.
- K** During the staining process a "picture framing" effect may occur where the frame and the panel meet. Certain door styles and colors (Ex. Shaker/Smoke) show this to a greater extent than other door styles. Additionally, some stains (Ex. Midnight/Smoke) bring out additional characteristics in the wood, this can often accentuate grain patterns as well as touch-ups and repairs. This is within industry standards and should not be considered a manufacturing defect.

### **THIRD PARTY WARRANTIES**

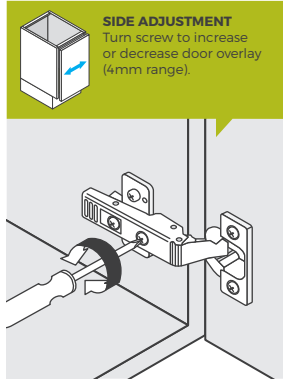
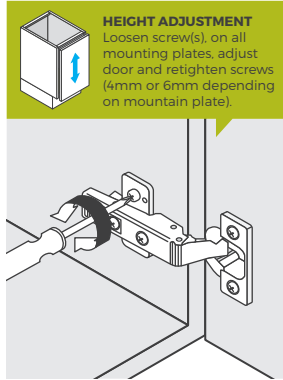
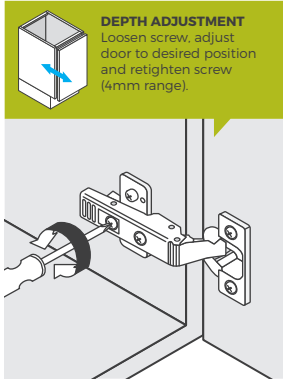
Drawer slides and hinges come with a Lifetime Guarantee and will be replaced, free of charge, on supply only basis if the product becomes defective.

# CABINET CARE

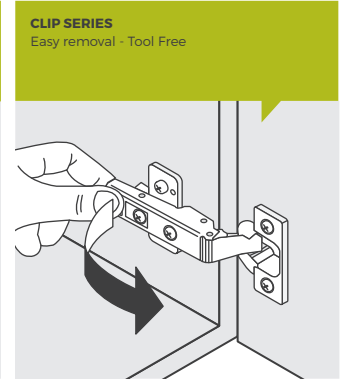
It is important to wipe up spills and water marks as they occur. Clean Wood, Melamine, Aluminum and Thermofoil cabinet exteriors and interiors using a soft, damp cloth (not a paper towel) and a mild, non-detergent soap (we recommend 100 parts water and 1-part liquid dish soap). Dry immediately. Do not use abrasive soap pads, abrasive cleansers, steel wool, bottled spray cleaners, solvent-based cleaners or cleaners containing bleach. Wax or polish is not necessary and is not recommended. Excessive moisture can damage the finish. Do not spray cleaner directly on cabinet or allow moisture to seep into seams or joints. Do not leave damp cloths draped over cabinet doors or drawer fronts.

## BASIC ADJUSTMENTS

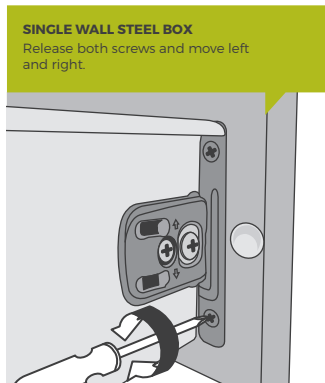
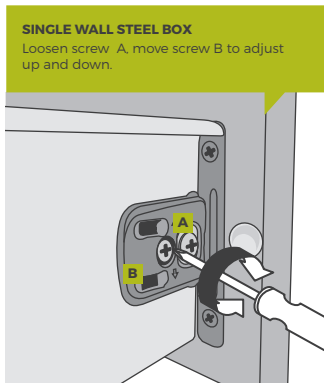
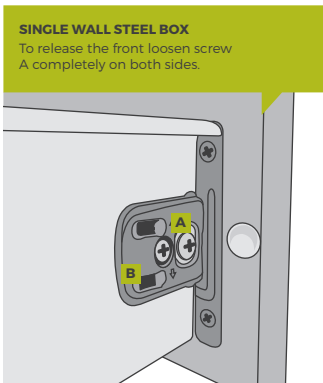
### DOOR ADJUSTMENT (use Philips screwdriver)



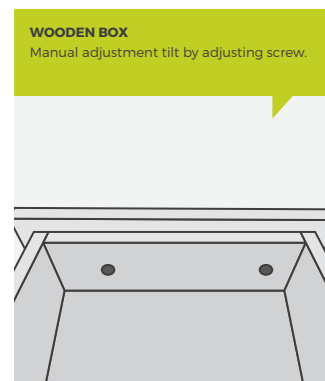
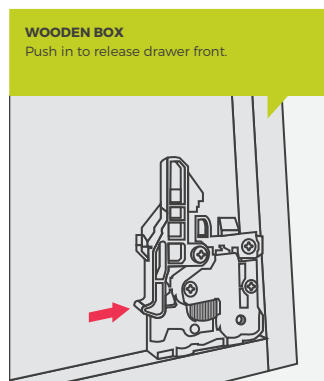
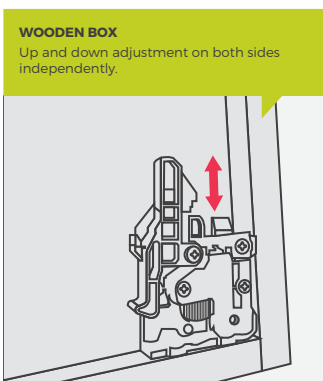
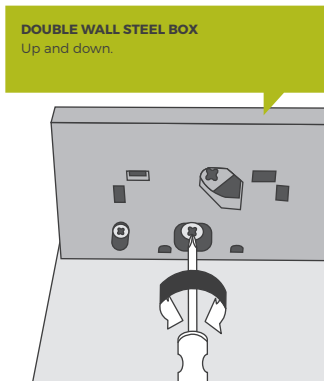
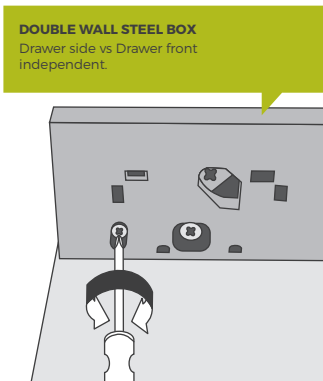
### DOOR REMOVAL



### DRAWER BOX ADJUSTMENT



### MOVING SHELVES



To watch a video of how to adjust or remove drawer boxes and shelves, please visit: [www.jcwcabinetry.com/support](http://www.jcwcabinetry.com/support)

If the drawers or hinges catch or become sluggish, a small amount of silicone lubricant should improve their performance. Be sure to wipe up any excess lubricant. Over time, cabinet doors and fronts can become out of alignment due to normal use. It is the homeowner's responsibility to adjust, tighten and realign as needed any cabinet door and drawer front that becomes misaligned due to normal use after close of escrow.